

# World Class Stone Care Solutions



Equipment • Marble Care • Terrazzo Care • Granite Care • Routine Maintenance • Ceramic Tile Care • Stone Protection • Stone Coating • Equipment

**SURFACE BARRIER**  
FLUOROPOLYMER NANOTECH  
Water-based, penetrating fluoropolymer resin. All floor finishes, natural stone, granite, marble, terrazzo, and other polished surfaces exhibit maximum durability and slip resistance.

**ROCK HARD**  
STEP 1  
STONE HARDENER  
The ideal base surface for polishing with DIAMOND SS Stone Regenerator. Hardens surface to minimize scratches, enhances surface polish. Easy to use.

**STONE BEAUTY**  
COUNTERTOP POLISH  
For polishing of granite and marble countertops.

**ONE STEP**  
CRYSTALLIZER  
SPRAY N' BUFF  
Advanced formula produces a very high polished shine. Newly sealed surface will resist acids and abrasives. Polished surfaces exhibit maximum durability and slip resistance.

**NCL-2**  
RAPID ACTION  
STONE CRYSTALLIZER  
A new dimension in stone restoration. Rapidly restores worn marble, limestone and other calcium-containing natural surfaces. Easy-to-apply, just spray and buff surface to a dazzling polish.

**HURRICANE**  
INTENSIVE  
STONE CLEANER  
An extra heavy duty formula that easily removes grease and oil from all stone surfaces. Free rinsing, does not leave dulling residue.



World Class Cleaning & Hygiene Solutions™

# World Class Stone Care Solutions

STONE CARE SOLUTIONS™ from NCL is a complete, professional program for the restoration, protection and long term maintenance of natural stone and ceramic surfaces. This coordinated system allows you to maintain your natural floor surfaces, countertops, tables and other areas at peak polish levels, while protecting the surface from spills and staining.

For over 50 years, discriminating sanitary maintenance professionals have trusted the performance and quality of the products from National Chemical Laboratories.

At NCL, all of our efforts are driven toward the development of new, innovative products and systems designed for exceptional performance while saving you time, labor and money.

STONE CARE SOLUTIONS™ offers you maximum performance with user-friendly, stone-specific products for maintaining almost any natural stone or ceramic tile surface. This comprehensive program is designed for building service contractors and in-house facility service providers, and does not require years of technical experience with abrasive methods!



## Stone Care Solutions

### Marble Care



#### ONE STEP™ Crystallizer Spray N' Buff

Simple-to-use restoration system for marble, terrazzo and polished limestone floors. Produces a very high polish. The newly restored surface resists scuffs, scratches and will be very durable. ONE STEP CRYSTALLIZER SPRAY N' BUFF dries as you buff and therefore requires no messy clean-up. UL Classified.

12 X 32 OZ QUARTS: Item # 2501-36  
4 X 1 GALLON: Item # 2501-29



#### MPR™ Marble Restoration Paste

An advanced compound for all polished marble, limestone, and terrazzo. MRP™ easily removes light scratches from the surface and creates a true dazzling polish on even difficult-to-polish marble surfaces (such as green or black marble). MRP does not require the use of weighted marble equipment and in many cases reduces the need for costly diamond honing.

10 LB CONTAINER: Item # 2522-23



#### NCL-2™ Rapid Action Stone Crystallizer

A new dimension in stone restoration. Developed as a simple-to-use restoration system for marble, terrazzo and polished limestone floors. Rapidly re-polishes worn marble, limestone and other calcium-containing natural surfaces. Easy-to-Use; just spray and buff surface to a dazzling polish. This newly restored surface will be very durable, resist scuffs and scratches. NCL-2™ dries as you buff and therefore requires no messy clean-up.

4 X 1 GALLON: Item # 2529-29



#### RESTORE-IT™ Marble Polishing Creme

RESTORE-IT is ready-to-use polishing cream that will re-polish worn marble, travertine, terrazzo, polished limestone, and may also be used to polish concrete after honing. Water marks, etching from fruit juices and alcohol, as well as minor surface scratches can be removed while restoring a high degree of natural polish. Use RESTORE-IT on floors as well as countertops and furniture. It contains no solvents and is VOC compliant.

12 X 32 OZ QUARTS: Item # 2502-45  
4 X 1 GALLON: Item # 2502-29



## Terrazzo Care



**ROCK HARD™ Step 1 - Stone Hardener**  
ROCK HARD™ is the first step of a synergistic two-step polishing and maintenance program for all types of terrazzo and natural stone. It hardens the surface of terrazzo, marble and granite. Then, with the use of DIAMOND GLOSS™, an easy-to-maintain, super high gloss is produced on the surface. It is recommended for polishing terrazzo, hard marble surfaces (such as serpentine), and most types of granite. Continued use increases the density of the surface for more resistance to wear and staining.

4 X 1 GALLON: Item # 2506-29

## Routine Maintenance



**PATINA™ Stone Cleaner / Conditioner**  
PATINA™ is an all natural, biodegradable, highly concentrated cleaner/conditioner designed for daily cleaning and conditioning of marble, granite, limestone, travertine, terrazzo, agglomerate, slate, unglazed ceramic, porcelain, terra cotta, saltillo and concrete. Regular use provides a dirt repellent barrier, prevents hard water damage, brings out the natural color and brilliance of the stone, and improves slip resistance on polished surfaces.

4 X 1 GALLON: Item # 2504-29

## Granite Care



**SHIELD Nano Molecular Coating & Enhancer**  
SHIELD has been engineered by NCL's world class chemists specializing in surface care and surface protection. SHIELD uses advanced nano molecular materials and proprietary ingredients to produce a high gloss, invisible protective coating. SHIELD is used on granite, ceramic, porcelain and other hard surfaces to improve the slip resistance, prevent staining, removes scratches, enhance color, increase gloss and protect the surface.

4 X 1 GALLON: Item # 2528-29



**STONE KLEEN™ Daily Neutral Stone Cleaner**  
STONE KLEEN™ is a highly concentrated neutral pH scrubbing cleaner designed specifically for daily use in automatic scrubbers. It is safe and effective on all stone surfaces: Marble, granite, limestone, onyx, terrazzo, travertine, flagstone, sandstone, slate, clay tile, saltillo tile, terra cotta, quarry tile, cantera, ceramic tile, pavers, grout, agglomerate and masonry surfaces. It is also excellent for damp mopping on polished marble surfaces where frequent re-polishing by the crystallization method is performed.

4 X 1 GALLON: Item # 2503-29



**HURRICANE™ Intensive Stone Cleaner**  
Hurricane Intensive Stone Cleaner is a high active, extra strength degreaser, cleaner and grout film remover that is safe for use on granite, marble, polished limestone, terrazzo, flagstone, clay tile, terra cotta, quarry tile, cantera, ceramic tile, porcelain, slate, pavers, grout, concrete, and masonry. Effectively removes dirt deposits, grease accumulation, food stains and petroleum-borne soils without affecting the natural structure of the stone. HURRICANE is intended for use as a periodic cleaner where heavy soiling is present, for construction job site clean-up and as an integral part of the STONE CARE SOLUTIONS Maintenance System.

4 X 1 GALLON: Item # 2510-29



# Stone Care Solutions

## Ceramic Tile Care



**TWISTER™ Mineral Deposit / Cement Film Remover**  
 TWISTER™ is a highly concentrated, fast acting, acid based cleaner for use on textured granite and other non-polished natural stones as well as unglazed ceramics. TWISTER™ removes grout and mortar residues, lime and hard water mineral deposits, efflorescence, surface rust and heavy construction dirt.

4 X 1 GALLON: Item # 2517



**CYCLONE™ Intensive Ceramic Tile / Grout Cleaner**  
 A heavy duty alkaline cleaner for removal of ingrained dirt, oil, grease and wax on all ceramic tile, porcelain tile and grout surfaces. CYCLONE™ is also a very effective grout cleaner for all polished and non-polished ceramic, porcelain and stone installations.

4 X 1 GALLON: Item # 2516-29



**SHIELD Nano Molecular Coating & Enhancer**  
 SHIELD has been engineered by NCL's world class chemists specializing in surface care and surface protection. SHIELD uses advanced nano molecular materials and proprietary ingredients to produce a high gloss, invisible protective coating. SHIELD is used on granite, ceramic, porcelain and other hard surfaces to improve the slip resistance, prevent staining, removes scratches, enhance color, increase gloss and protect the surface.

4 X 1 GALLON: Item # 2528-29

## Stone Protection



**SURFACE BARRIER™ Water-Based Fluoropolymer Impregnator**  
 SURFACE BARRIER™ is a “state-of-the-art” water-based fluoropolymer impregnator that penetrates deep into porous surfaces, creating a long lasting, invisible barrier that allows vapor transmission. SURFACE BARRIER™ repels and protects against dirt, oil, food stains, grease, mold, mildew and waterborne soils. SURFACE BARRIER™ can be used on all indoor and outdoor natural stone surfaces including: marble, granite, limestone, onyx, travertine, terrazzo, flagstone, sandstone, slate, clay tile, saltillo tile, terra cotta, quarry tile, cantera, unglazed ceramic tile, pavers, grout, concrete and masonry surfaces. SURFACE BARRIER™ is ideal for indoor use on floors, kitchen countertops, showers, tubs, fireplaces, etc. SURFACE BARRIER™ is also designed for outdoor use on stone surrounds, terraces, balustrades and swimming pool surrounds.

12 X 32 OZ QUARTS: Item # 2500-42  
 4 X 1 GALLON: Item # 2500-29



**SOIL-LOK™ Penetrating Grout Sealer**  
 Uniquely designed for ceramic tile grouting, this exceptional product repels dirt, oil and water; keeps grout looking bright. A water-based penetrating sealer that repels oil, dirt and moisture from grout. Detergent washable, this product will keep grout looking like new. Does not change the original color of grout. SOIL-LOK™ allows for vapor transmission to prolong grout life. Can be used indoors or outdoors. Mild odor.

12 X 32 OZ QUARTS: Item # 2521-45

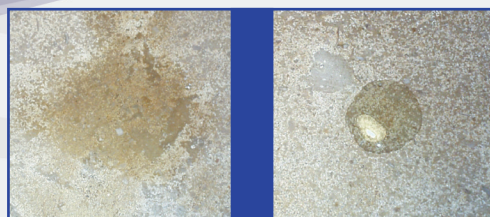
### Why use SURFACE BARRIER?

Prior to any maintenance program, a protective barrier must be applied to prevent the floor from becoming permanently stained by juices, coffee, tea, oil, grease and other substances.

This barrier, known as a stone impregnator, will seal the pores of the stone without blocking vapor transmission which can structurally damage the stone surface.

UNTREATED

TREATED WITH SURFACE BARRIER™



The stone surfaces above were affected by mineral seal oil. On the left (untreated side), the oil has left an immediate stain, while the oil on the right side (treated with SURFACE BARRIER™) has “beaded-up” and can be removed easily without staining the stone.



## Stone Coating



### DURA-GLOSS™ Multi-Speed Buffable Floor Coating

DURA-GLOSS™ utilizes an advanced polymer system to provide a brilliant gloss and protective coating on most natural polished stone surfaces. DURA-GLOSS™ improves slip resistance on highly polished stone surfaces. This water-based high solids formula will produce a high initial gloss that can be maintained with any type of floor equipment, from conventional to UHS. DURA-GLOSS™ levels easily and dries rapidly.

4 X 1 GALLON: Item # 2507-29



## Specialty Cleaning



### STONE BEAUTY™ Countertop Polish

STONE BEAUTY is a ready-to-use polish that restores and protects natural stone countertops. STONE BEAUTY is specifically formulated to be safe on stone surfaces such as granite, marble, limestone, travertine and other natural surfaces.

12 X 32 OZ QUARTS: Item # 2518-45

## Stone Care Equipment



### PRO SERIES STONE BLAZER™ Ultimate Duty Stone Restoration Machine

Designed for the most discriminating Professional Stone Maintenance Worker. Ergonomically designed handle and Top-Lock Adjusting Handle simplifies the operation and reduces operator fatigue. Extra wide handle for comfort and ease of use. Extra heavy duty 4 gallon solution tank with positive shut-off valve. Heavy duty 1.5 HP enclosed motor. Rugged steel welded frame.

17" EACH: Item # 2584

20" EACH: Item # 2585



### STONE BLAZER™ Ultimate Duty Stone Restoration Machine

Heavy-duty, heavy weighted versatile machine for cleaning, crystallization, wet polishing or diamond grinding of marble, granite, limestone, concrete, terrazzo and other stone surfaces. Heavy-duty 1.5HP enclosed motor. Includes NAT-STONE™ Diamond Pad Driver and 2 ea. 25 lb U-weights. Durable steel welded frame for up to 220 lb capacity. 50' 14-3 2-part extra heavy duty power cord.

17" EACH: Item # 2530

20" EACH: Item # 2549



# Stone Care Solutions

## Stone Care Equipment



### **NAT-SPLASH GUARD™ High Density Plastic Guard**

Designed to contain splashing that results from polishing floors. Keeps surrounding areas cleaner to reduce clean up time. Available in 17" and 20" sizes to fit most machines. Installs easily, and can be removed easily for cleanup. High density plastic construction.

17": Item # 2578

20": Item # 2579



### **NAT-STONE™ Diamond Pad Driver**

Replacement pad drivers designed for use with 17" and 20" STONE BLAZERS. Features a plastic shower feed block with special driver. Heavy-duty construction for long lasting performance. Applix® material provides superior holding power on diamonds or pads.

17": Item # 2532

20": Item # 2556



### **NAT-SPEED™ High Productivity Diamond Pad Driver**

Designed for use with STONE BLAZER equipment to increase productivity and diamond's ability to remove scratches from surfaces. Available in 17" size. Reduces labor cost up to 65%. Rugged steel construction. Counter rotating planetary heads increase productivity over 300%.

17": Item # 2551



## Diamonds



### LUMINAIRE™ 3" Diamond Pads

Premium performance diamond polishing discs for polishing stone surfaces. Exceptional quality and performance. Sold individually.

- #50 Green: Item # 2305
- #120 Black: Item # 2306
- #220 Red: Item # 2307
- #400 Yellow: Item # 2308
- #800 White: Item # 2309
- #1800 Blue: Item # 2310



### GRANITE MASTER™ 3" Diamond Pads

Premium performance diamond polishing discs for polishing granite surfaces. Exceptional quality and performance. Sold individually.

- #50 Blue: Item # 2329
- #150 Gold: Item # 2330
- #300 Orange: Item # 2331
- #500 Red: Item # 2332
- #1000 Green: Item # 2333
- #2000 Turquoise: Item # 2334
- #3000 Blue: Item # 2335



### ECONO DIAMONDS™ 3" Diamond Pads

Economical performance diamond polishing discs. Exceptional quality and performance. Sold individually.

- #200 Orange: Item # 2336
- #300 Light Orange: Item # 2337
- #500 Red: Item # 2338
- #1000 Blue: Item # 2339
- #2000 Light Blue: Item # 2340

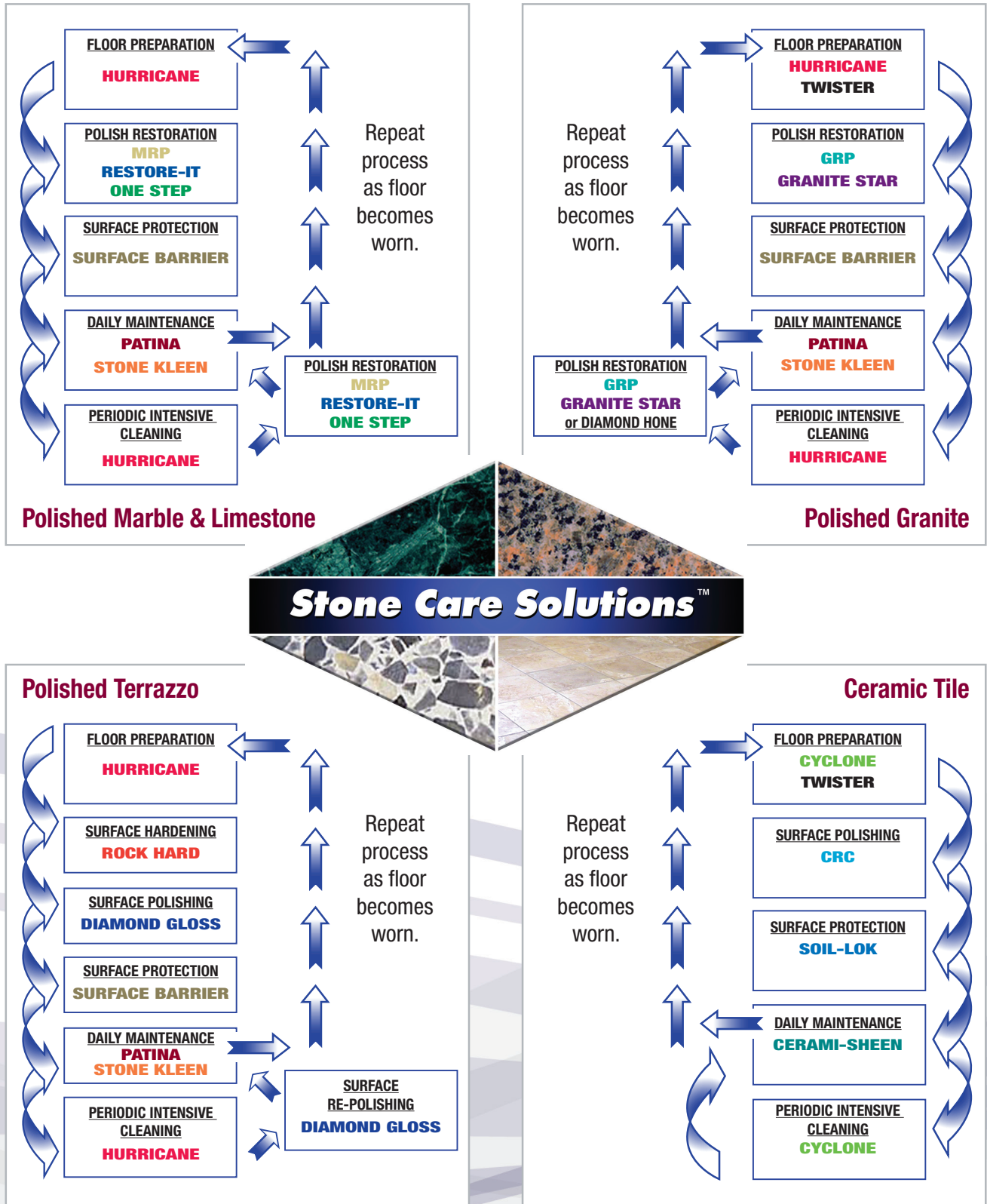


### WET CONCRETE DIAMONDS™ 3" Diamond Pads

Premium performance diamond polishing discs for polishing concrete surfaces. Exceptional quality and performance. Sold individually.

- #50 Light Green: Item # 2321
- #120 Brown: Item # 2322
- #220 Maroon: Item # 2323
- #400 Yellow: Item # 2324
- #800 White: Item # 2325
- #1800 Turquoise: Item # 2326

# Procedure Flow Charts for NCL Stone Care Solution Products.



401 N. 10th Street • Philadelphia, PA 19123  
 www.nclonline.com • e-mail: info@nclonline.com  
 1-800-628-2436

Distributed By: